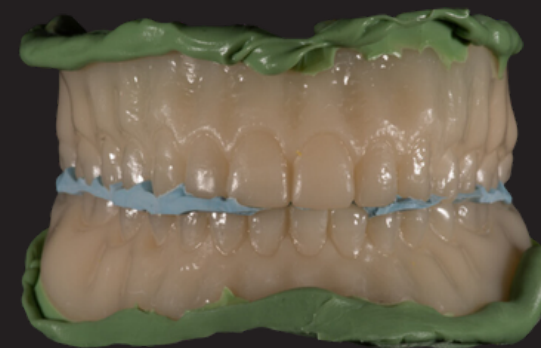


# NEXT STEPS AFTER RECEIVING TRY-INS

## IOS Scans



### Try-In Fits Well

- 1.1. Go to your account, and open the case. Cases are visible for 14 days, so if it's not in a visible folder go to the top where the search bar is located and look for the patient name or the ID # it's under to locate the case.
2. On the right-hand side of the screen select the tab "actions – select redesign".
3. A message box will pop up, type in "try-in approved, please send final files."
4. The case will then be sent back into the needs approval folder, where the case can be looked over a final time. From here you can "approve and manufacture" or download the files for in-house manufacturing.

### Try-In Fits Well, But VDO Is Off

1. Download the designed case, by opening the case on the platform, clicking "actions – download files – finished scans – download" and then open your 3shape dental system. Import it using "ctrl' and "i" at the same time onto the platform.
2. Create a new order and scan the new bite with the try-in denture, or import the scans accordingly.
3. In the new order you just created, do right-click, select COPY, and then select copy and re-use try in design. This will open a window where you need to select the first try in design.
4. Once the copy is ready, proceed to open the design, you will have a step called "Align upper/lower to try in" where you can align the new bite to the scans and re-accommodate the bite for the patient by keeping the old design and just readjusting the bite position. The design will be changed to match the new bite.
5. Export the case by right-clicking "advanced – export".
6. Open the existing case that's already on the platform, go to file, scroll down to initial scans, and upload (drag and drop) the new compressed zip file that was scanned and exported.
7. Once it's uploaded, go to the Actions tab, and select Redesign. A message box will pop up, type in the adjustments that were physically made to the try-in, and any other adjustments (examples: change shade to B1, longer/shorter teeth, midline, etc.) and type Please send final files.
8. The case will then be sent back into the needs approval folder, where the case will be sent back for approval and can be looked over a final time. From here you can "approve and manufacture" or download the files for in-house manufacturing.

### Try-In Doesn't Fit Well

(Short borders, loose fit, etc.)

1. If the try-in does not fit well from when the impression was taken from the patient, take a light body wash impression inside the try-in. Keep the new bite in place with a bite registration mouse to capture the correct occlusion.
2. Create a new case on 3shape, creating the order as another try-in or final. Scan the try-in, using it as a reference denture.
3. Once finished scanning, export the case by right-clicking "advanced – export".
4. Drag and drop the case onto our platform as a new case. If the case is a final, before submitting, click the modifications button and select straight to final. You can also add any additional instructions (examples: change shade to B1, move midline .5 mm, longer/shorter teeth specifying teeth mould, etc.).
5. The case will then be sent back into the needs approval folder, where the case will be sent back for approval and can be looked over a final time. From here you can "approve and manufacture" or download the files for in-house manufacturing.