



# Denture – Stratasys

Stratasys Design Guide Codes

3shape 

# Design Guide Codes

# 3Shape Design Services

We have digital designers worldwide, and using Design Guide codes improves predictability and efficiency over long, detailed instructions.

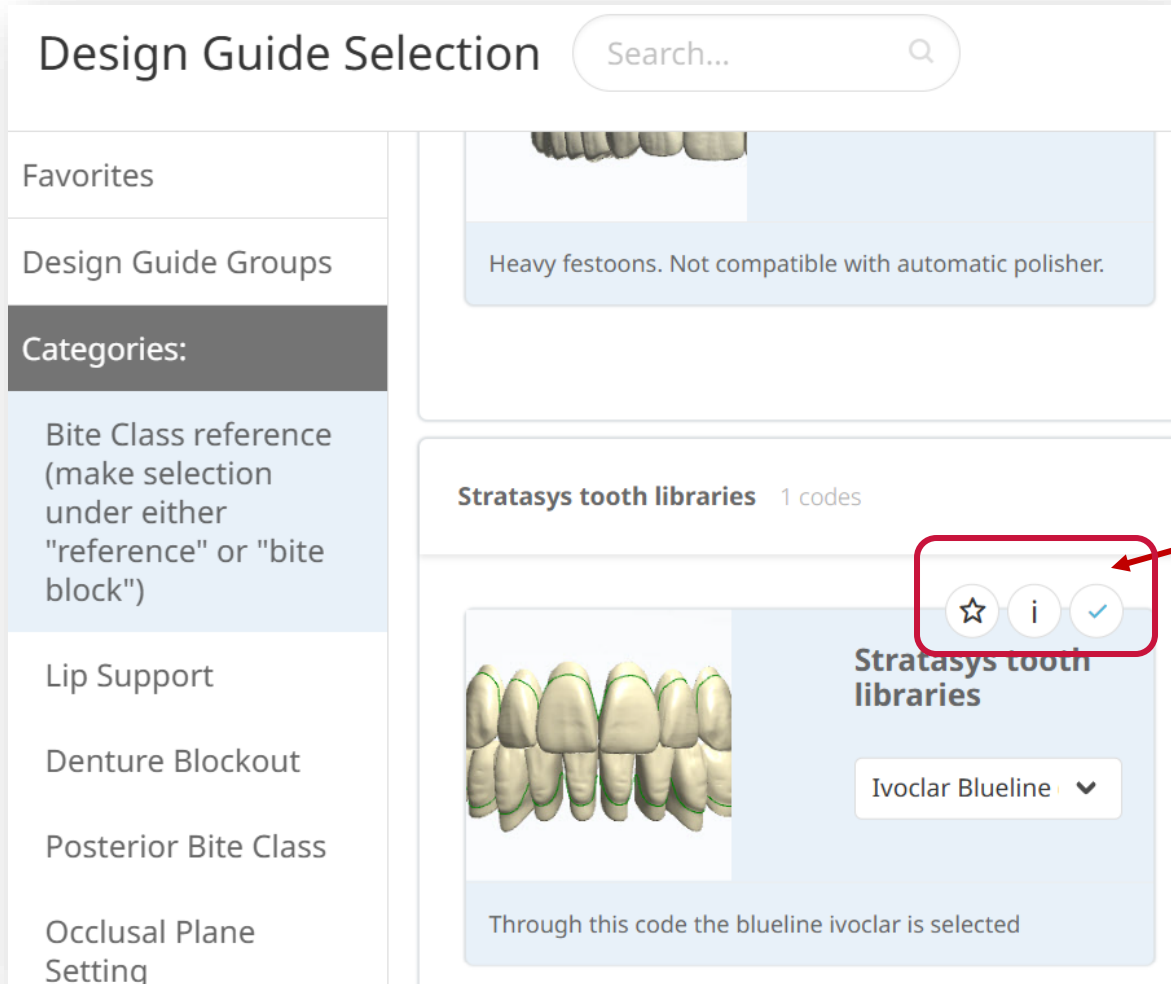
## Streamline Your Workflow:

Set up your regular codes as defaults for efficiency.  
Identify favorite codes that may change from case to case for faster entry.

## Stratasys Exclusive Codes:

Stratasys has unique Design Guide codes exclusive to Stratasys Dentures—we'll highlight them here!

# Order Codes for Stratasys Dentures



## Design Guide Selection

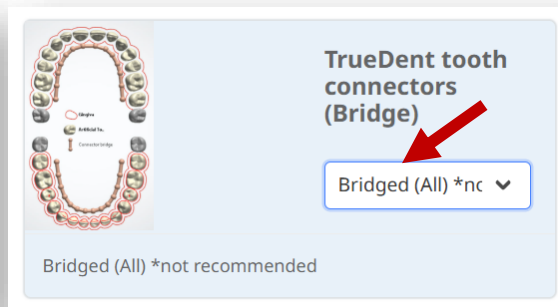
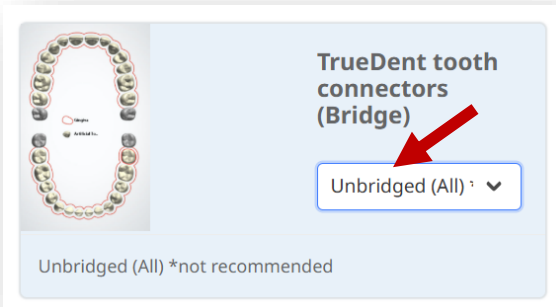
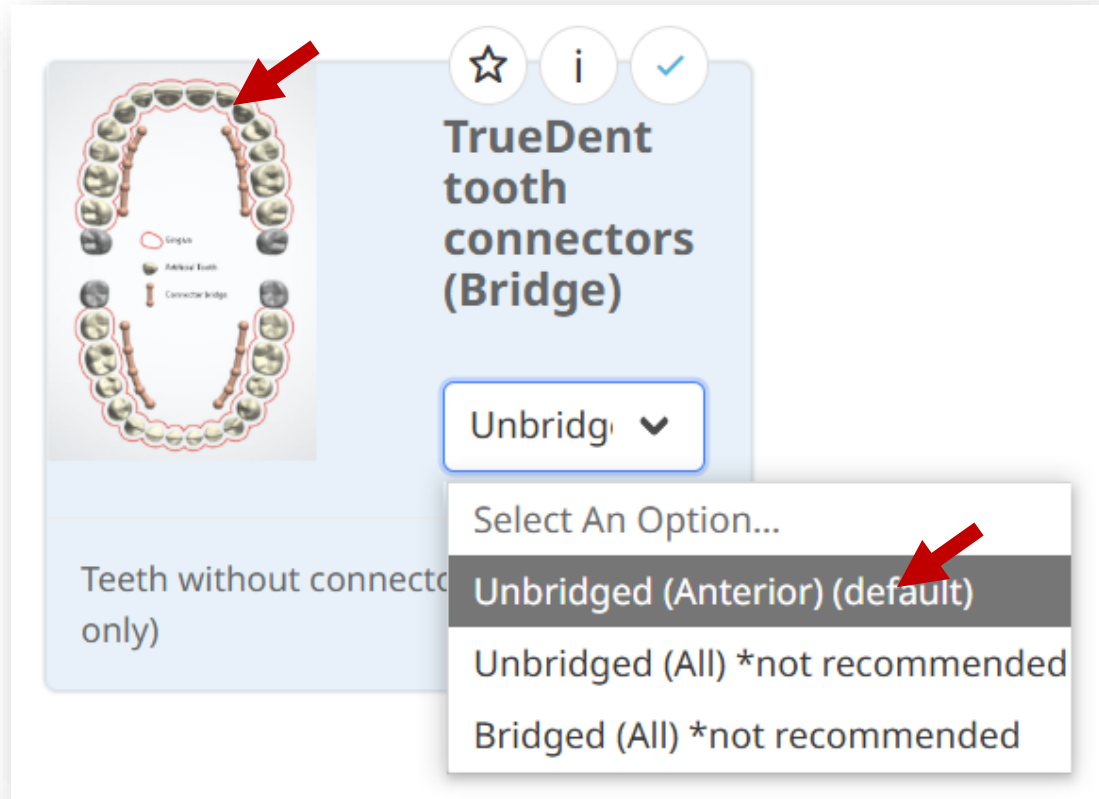
There are about a dozen design codes. Some will remain as default settings, while others should be adjusted for each case.

Review each code and decide how you want to categorized them

Click the **Star \***, **i** and **✓** can save the code as a Favorite, in a Design Group or a default for all your cases. You can modify this anytime!

Chosen codes will show in your Favorites or Group Designs for later cases to make case entry very quick and effecient.

# Suggested Default Codes



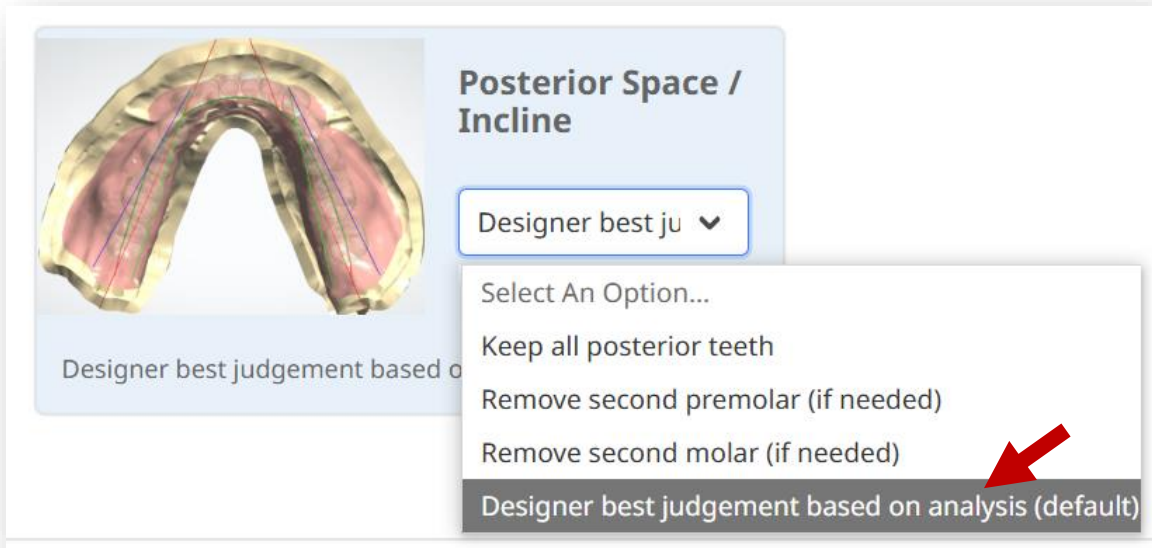
## Denture Connectors

One of the hallmarks of Stratasys is its ability to print the teeth and denture base simultaneously – no assembly or unit bridging needed! This saves technician valuable time and greatly enhances anterior aesthetics.

For design and production efficiency, Stratasys recommends the posterior teeth to be bridged, and the Anterior teeth separate providing for superior Anterior aesthetics.

If you prefer the entire case bridged or unbridged, those options are available.

# Default Codes



## 22.5° Degree Incline

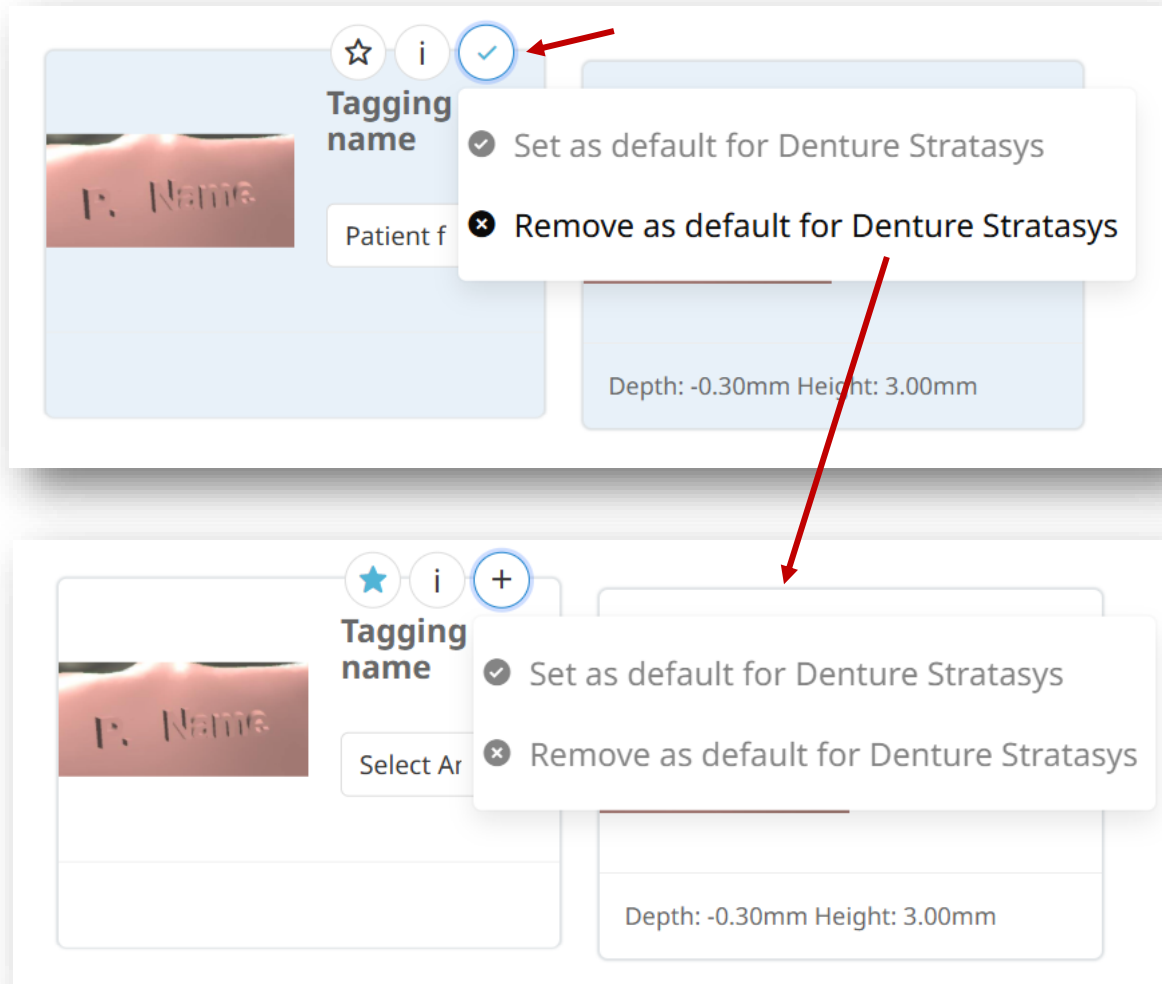
A key design principle for preventing premature occlusion of poster denture teeth is the 22.5° incline fundamental by Gerber.

This means:

- No posterior teeth should be set over the Mandibular Retromolar Pads or Maxillary Tuberosities.
- The 1st Molar should be positioned at the lowest apex of Ramus, aligning with the Curve of Spee.
- No teeth set past the 22.5 degree incline of the ramus.

3Shape's program has built in diagnostics analysis for the 22.5 degree incline. Most of our clients find this quite successful as a default setting!

# Removing a Code Example



## Name Tag Placement Your Choice

Name Tags can be added either in 3Shape Desing or in the Stratasys workflow before printing (recommended).

To remove the Name Tag as a Default in 3Shape, click on the check the blue ✓ circle and select "Remove as Default for Denture Stratasys."

The code box will turn white as a visual cue.

If needed later, it will remain on the codes page in white and simply click your preferences.